



# EPIQ Advanced Clinical 3D Tools

Adding value to the diagnosis of heart disease

Philips Ultrasound  
Advanced Clinical  
Cardiology 214

This one-day course is designed to provide a solid foundation in Live 3D echocardiography for physicians and cardiac sonographers who are new 3D users. Guided workshops and instructor demonstrations compliment detailed presentations on the theory and clinical application of Live 3D echocardiography and advanced 3D automation.

The course focuses 3D manipulation, and quantification. Students will have ample opportunity for hands-on experience with cropping, Dynamic HeartModel<sup>A-I</sup>, 3D Auto RV<sup>A-I</sup>, MultiVue, TrueVue and TouchVue.

#### Prerequisite

Attendees should have completed their onsite installation training and the Advanced Customer Training Cardiovascular Live 3D course.

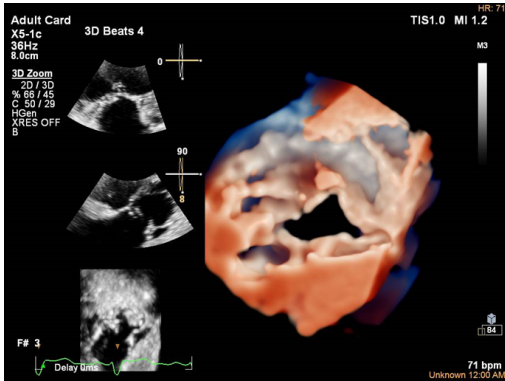
#### Faculty

Philips Ultrasound Clinical Education



# PHILIPS

# EPIQ Advanced Clinical 3D Tools (CV214)



The goal of this course is to develop a foundation in Live 3D echo by providing a hands-on experience while actually scanning live models. Without the stress of the workplace one can relax and focus on the objectives. Attendees can return to their facilities ready to hone their skills and apply the methods learned in the course.

## Course objectives

Upon completion of this program, attendees should be able to:

- Discuss the strategies for obtaining good quality datasets
- Identify good and poor datasets
- Describe 3D controls and cropping tools
- Review datasets with normal anatomy to show specific cardiac structures
- Review datasets with abnormal anatomy
- Discuss utility and options available in current 3D echo technology
- Identify measurements that can be made using 3D techniques

## For more information

Contact Philips Ultrasound Clinical Education at 800-522-7022 and visit our education catalog at [www.learningconnection.philips.com/ultrasound](http://www.learningconnection.philips.com/ultrasound)



Please visit [www.learningconnection.philips.com/ultrasound](http://www.learningconnection.philips.com/ultrasound)



© 2014 Koninklijke Philips Electronics N.V.  
All rights are reserved.  
JUN 2014

Philips Healthcare reserves the right to make changes in specifications and/or to discontinue any product at any time without notice or obligation and will not be liable for any consequences resulting from the use of this publication.

Philips Healthcare is part of Royal Philips

[www.philips.com/healthcare](http://www.philips.com/healthcare)  
[healthcare@philips.com](mailto:healthcare@philips.com)  
fax: +31 40 27 64 887

Philips Healthcare  
22100 Bothell Everett Highway  
Bothell, Washington 98021