



HD11 XE Advanced Customer Training

Philips Ultrasound
Advanced Customer
Training HD 200
Series

In today's competitive and dynamic healthcare climate, it is critical to use your medical imaging systems to their fullest potential. Our goal at Philips Healthcare is to provide the clinical education you need to make the most of your equipment investment.

Course Description

Advanced Customer Training (ACT) courses are designed to educate customers on the leading-edge technologies specific to each system and application. Following your on site installation training, the intensive ACT serves to expand and deepen your knowledge.

Prerequisite

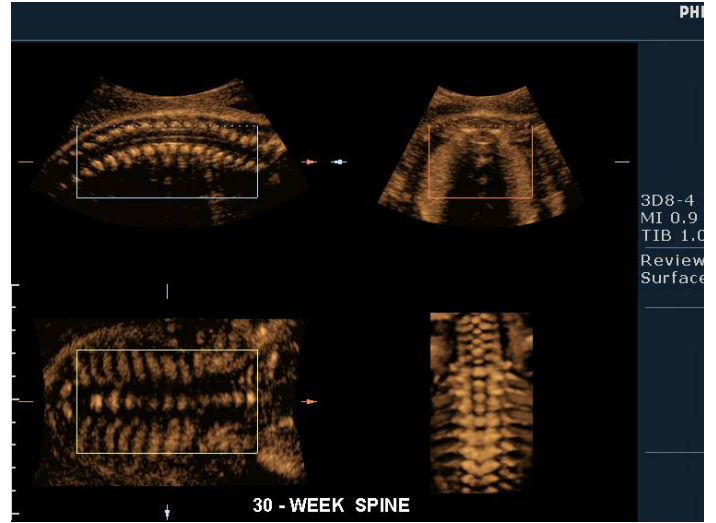
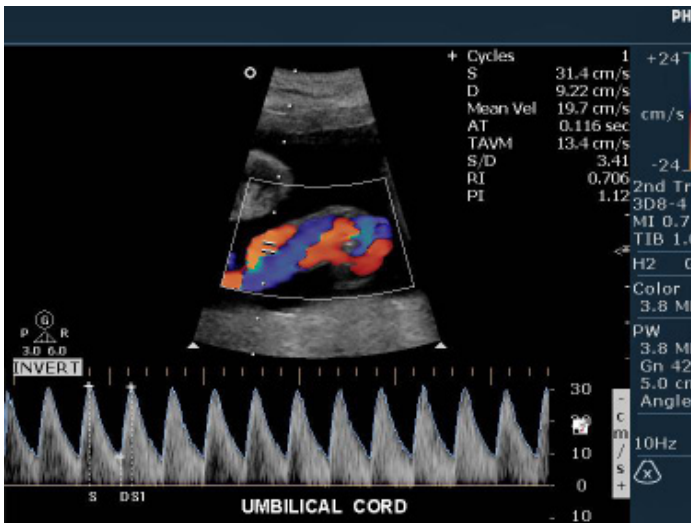
Attendees should have completed their on site installation training.

Locations

Will be held in Philips central locations in Alpharetta, Georgia; Bothell, Washington; and Cleveland, Ohio.

PHILIPS

HD11 XE Advanced Customer Training (HD200)



General Imaging

Course Objectives

Advanced Customer Training (ACT) consists of a one-day course of advanced and intensive training on the HD11 XE ultrasound system.

Upon completion of the course, the attendee should be able to:

- Apply advanced system optimization techniques
- Define volume imaging and the associated clinical benefits
- Explain and discuss the acquisition of freehand 3D volumes
- Explain and discuss the acquisition of automated 3D/4D volumes
- Define Multiplanar Reformatted Views (MPRs)
- Describe the data manipulation of a 3D volume
- Explain and discuss the basics of STIC in the evaluation of the fetal heart

Faculty

Philips Ultrasound Clinical Education

For more information

Contact Philips Ultrasound Clinical Education at 800.522.7022 and visit our education catalog at www.learningconnection.philips.com/ultrasound

Please visit www.learningconnection.philips.com/ultrasound



© 2014 Koninklijke Philips Electronics N.V.
All rights are reserved.
JUN 2014

Philips Healthcare reserves the right to make changes in specifications and/or to discontinue any product at any time without notice or obligation and will not be liable for any consequences resulting from the use of this publication.

Philips Healthcare is part of Royal Philips Electronics

www.philips.com/healthcare
healthcare@philips.com

Philips Healthcare
22100 Bothell Everett Highway
Bothell, Washington 98021