



PHILIPS

Clinical Education

Abdominal Doppler Assessment

In today's competitive and dynamic healthcare climate, it is critical to use your medical imaging systems to their fullest potential. Our goal at Philips Healthcare is to provide the clinical education you need to make the most of your equipment investment.

Philips Ultrasound Vascular 310

This Philips Clinical Education full day course for noninvasive vascular diagnosis specialists is developed to meet the climbing need to advance the cognitive and technical skills needed to perform Doppler assessment of the abdominal vasculature. Beginning with the abdominal aortic outflow, attendees will review flow profiles of the major

abdominal aortic branches, the hepato-portal Doppler assessment, and the inflow/venous return flow profiling. All lecture content is supported with multiple scanning workshops on live models.

Prerequisite

Must be a practicing sonographer with some abdominal and/or vascular imaging experience.

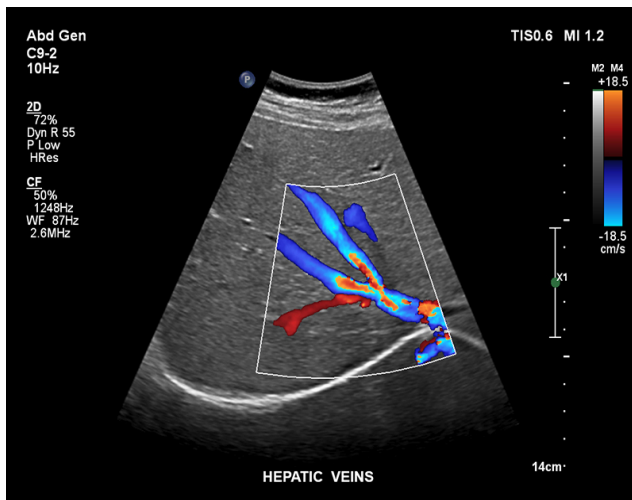
Faculty

Dr. Leslie Scouff & Philips Clinical Education Specialists

Remote Access Available

This course has remote access opportunities available. Please speak to your Clinical Specialist for more information.

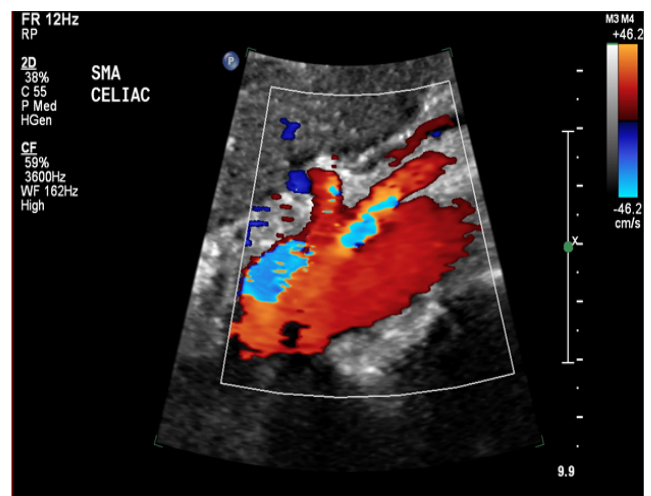
Abdominal Doppler Assessment (VASC 310)



Course Objectives

Upon completion of this course, the learner should be able to:

- Describe the major branches of the aorta and sonographic technique for imaging
- Explain the vascular flow profiles typically found in the aorta, celiac artery, hepatic artery, splenic artery, superior mesenteric artery, renal arteries, inferior mesenteric artery and iliac arteries.
- Discuss the significance of hepatic and portal flow and the flow assessment using Doppler
- Describe portal vein assessment using 2D and Doppler imaging
- Review the venous vessels of the abdomen and describe the sonographic technique for imaging
- Explain venous Doppler flow profiles with respect to the IVC and the major confluences.
- Discuss common abdominal vascular flow abnormalities and coexisting conditions.



For more information

Contact Philips Ultrasound Clinical Education at 800.522.7022 and visit our education catalog at

www.learningconnection.philips.com/ultrasound

